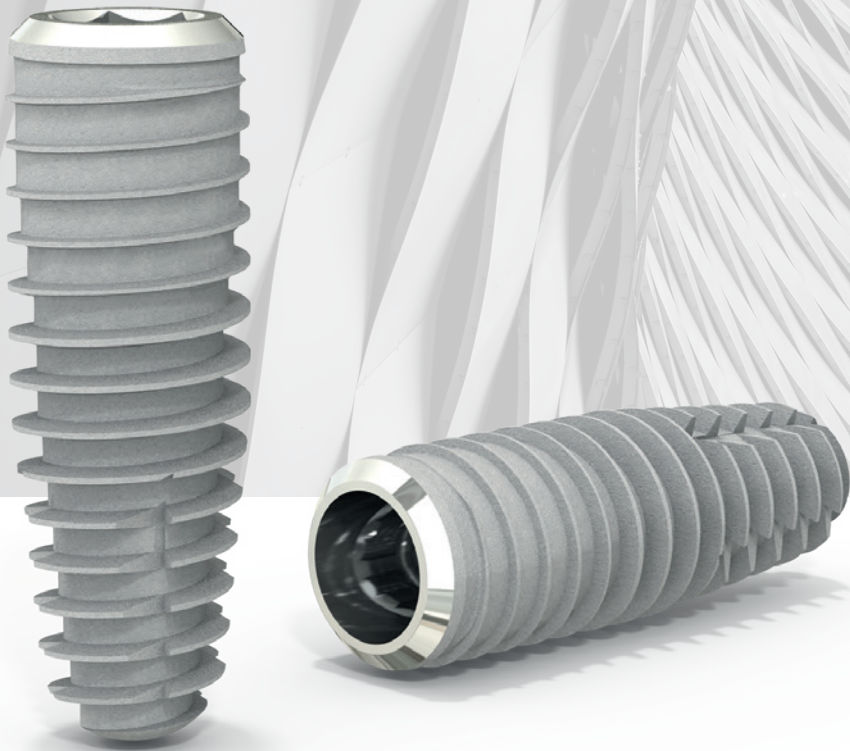




# SICtapered SICvantage<sup>®</sup> tapered

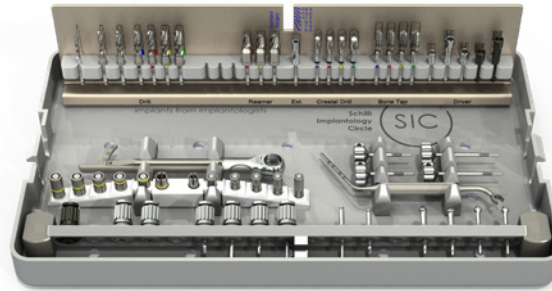


We have listened to you

The individual approach

# SICtapered and SICvantage<sup>®</sup> tapered

1 One single surgical set-up



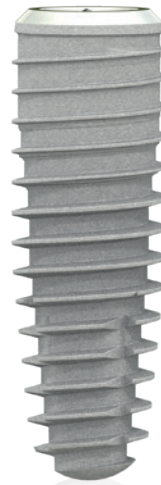
3 Three complementary implant solutions for high chairside flexibility:

SICace<sup>®</sup>



The universal parallel-walled implant line with over 10 years of university clinical documentation.

SICtapered  
SICvantage<sup>®</sup> tapered



The tapered implant body leads to higher primary stability in most bone types and overcomes compromised anatomical situations such as narrow ridges, converging root tips and anatomical undercuts. Ideal for immediate placement with temporary restoration.

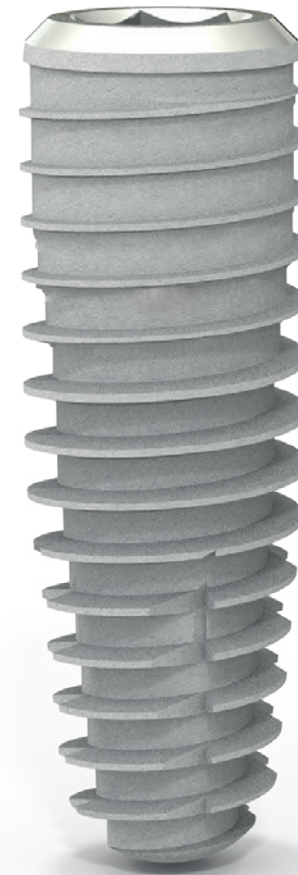
SICmax<sup>®</sup>  
SICvantage<sup>®</sup> max



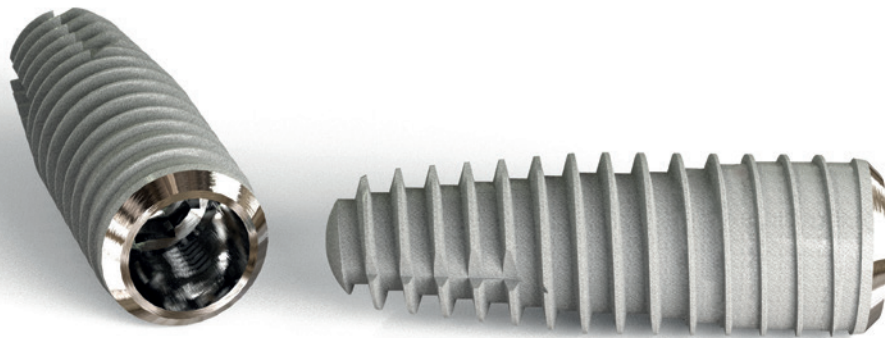
The complementary implant for soft bone quality and extra-ordinary primary stability in the most challenging indications.

The SICtapered and SICvantage® tapered implant body offers all the advantages of the clinically proven features of the SIC invent implant lines.

The individual adjustable drilling protocol puts you in control of your implant case!



- Sharper threads
  - for safe cutting of hard bone and reduction of bone compression
- Slightly more tapered core in the middle of the implant
  - for adjusting the bone compression according to the drilling protocol
- Improved flute design
  - for better cutting performance
- More tapered core and threads in the apical partition
  - for deeper initial insertion



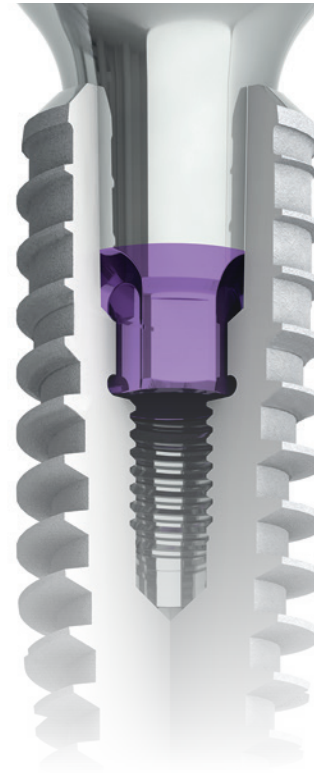
# 2 Two Different Implant-Abutment Connections

## Internal Hex



- High precision internal hex for a “close to zero” micro-movement
- Long guided surfaces  
– for highest mechanical stability
- Reliable retention of the abutment components  
– to avoid loose screws
- Uniform tightening torque of 20 Ncm for all retention screws
- Platform switching  
– for better bone preservation





## Conical



- Self-locking “cold welding” inner Morse taper connection with a cone angle of 2.8°  
– no screw loosening
- Prosthetic restoration retained with or without a fixation screw  
– simplified prosthetic restoration
- SICvantage® “Swiss Cross”: 4 groove index  
– for safe implant placement, abutment positioning and taking a precise open or closed impression
- Outstanding mechanical stability also with 3.0 mm implants  
– for a safe clinical result
- Simple and safe abutment removal from the implant cone with an extractor even after years of loading  
– for easy handling
- Platform switching  
– for better bone preservation






## SICtapered



Implant Ø	Prosthetic connection	Geometry of the connection	7.5 mm Length	9.5 mm Length	11.5 mm Length	13.0 mm Length	14.5 mm Length
3.7 mm	3.3 mm 	Inner Hex 2.3	935371	935372	935373	935374	935375
4.2 mm	3.3 mm 		935377	935378	935379	935380	935381
4.7 mm	4.2 mm 		935383	935384	935385	935386	935387
5.2 mm	4.2 mm 		935389	935390	935391	935392	935393



## SICvantage<sup>®</sup> tapered






Implant Ø	Prosthetic connection	Geometry of the connection	7.5 mm Length	9.5 mm Length	11.5 mm Length	13.0 mm Length	14.5 mm Length
3.0 mm	2.2 mm 	Morse Taper		951360	951361	951362	951363
3.7 mm	2.5 mm 		951371	951372	951373	951374	951375
4.2 mm	2.9 mm 		951377	951378	951379	951380	951381
4.7 mm	2.9 mm 		951383	951384	951385	951386	951387
5.2 mm	2.9 mm 		951389	951390	951391	951392	951393

### Implant-Abutment Connection

#### SICtapered

Implant	Prosthetics
3.7 mm	 3.3 mm
4.2 mm	
4.7 mm	 4.2 mm
5.2 mm	

#### SICvantage<sup>®</sup> tapered

Implant	Prosthetics
3.0 mm	 2.2 mm
3.7 mm	 2.5 mm
4.2 mm	 2.9 mm
4.7 mm	
5.2 mm	



**SIC invent AG**  
Birmannsgasse 3  
4055 Basel, Switzerland  
Tel.: +41 61 260 24 60  
Fax.: +41 61 261 39 68  
[contact.switzerland@sic-invent.com](mailto:contact.switzerland@sic-invent.com)

**SIC invent Deutschland GmbH**  
Willi-Eichler-Str. 11  
37079 Göttingen, Germany  
Tel.: +49 551 504 29 40  
Fax.: +49 551 504 29 45 5  
[contact.germany@sic-invent.com](mailto:contact.germany@sic-invent.com)

**SIC invent Austria GmbH**  
Kohlmarkt 7/Stg. 2/58  
1010 Wien, Austria  
Tel.: +43 1 533 70 60  
Fax.: +43 1 533 70 60 50  
[contact.austria@sic-invent.com](mailto:contact.austria@sic-invent.com)

**SIC invent Asia Pacific Inc.**  
6F, Hyojin Bldg., 1540-5 Seocho-dong,  
Seocho-gu, Seoul, 137-070, Korea (ROK)  
Tel.: +82 2 585 9700  
Fax.: +82 2 584 4411  
[contact.korea@sic-invent.com](mailto:contact.korea@sic-invent.com)

**SIC invent ShangHai Limited**  
Office 721, Building 2-1,  
German Business Center No.88,  
Keyuan Road, Zhangjiang Hi-Tech Park  
201203 Shanghai, PR China  
Tel: +86 21 585 973 90  
[contact.china@sic-invent.com](mailto:contact.china@sic-invent.com)